

**PRIORITAIRE**  
[1. luokka - 1. klass]

**IBRS/ CCRI**  
Sopimus 00330/41

NO STAMP REQUIRED.  
NE PAS AFFRANCHIR.

**Vastauslähetyt Suomi Finland**  
**Réponse payée Finlande**  
**Alvar Aalto Academy / Museum**  
**PL 461**  
**FIN-40003 Jyväskylä**  
**Finland**

# PROGRAMME

The organisers reserve the right to change the programme.

## Friday Aug 30, 2002

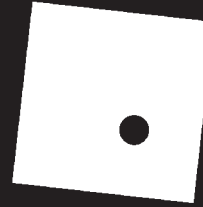
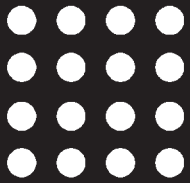
- 8.00–10.00** **Conference registration/  
opening**
- 10.00–10.30** **Introductory keynotes**
- 10.30–11.30** **Adrian Forty**  
PhD., professor in History of  
Architecture at Bartlett School of  
Architecture, University College  
London UK  
**The Sixties:  
Architecture's Best  
Years?**
- 11.30–12.30** **Claes Caldenby**  
Professor, School of Architecture,  
Chalmers University of Technology,  
Sweden  
**A twofold movement.  
Swedish architecture  
in the 1960s  
between production  
adapted building and  
the "haven of beauty".**
- 12.30–14.00** **Lunch**
- 14.00–18.30** **Stream papers**
- 18.30–19.00** **Public debate**
- 20.00–** **Welcome reception at  
Alvar Aalto Museum**

## Saturday Aug 31, 2002

- 10.00–11.00** **Mart Kalm**  
PhD., professor at Department of  
History of Art, Estonian Academy  
**Sauna-party in  
Summer Cottage.  
Soviet Estonians  
play the West**
- 11.00–12.00** **Beatriz Colomina**  
PhD., Professor, History and  
Theory of Architecture Director of  
Graduate Studies, Princeton  
University School of Architecture  
**Enclosed by Images:  
the Eames Multi-Screen  
Architecture**
- 12.00–13.30** **Lunch**
- 13.30–17.30** **Stream papers**  
(in two parallel sessions)
- 17.30–18.00** **Public debate**
- 20.00–** **Evening party**

## Sunday Sept 1, 2002

- 10.00–11.00** **Marc Treib**  
Architect, Professor, Department of  
Architecture University of California  
Berkeley, USA  
**Modernism in the North/  
California**
- 11.00–12.00** **Dennis Doordan**  
Professor, School of Architecture,  
University of Notre Dame, USA  
**From the Cold War  
to Postmodernism:  
Architectural  
Developments  
in the 1960s**
- 12.00–13.30** **Public debate,  
ending of the  
symposium**  
The concluding panel will include  
the keynote speakers as well as  
visiting specialists, such as **prof.  
Vladimir Slapeta** (Czech Repub-  
lic) and **prof. Mark Wigley** (USA).
- 13.30–15.00** **Lunch**
- 15.00–17.30** **Field trip to the sur-  
roundings of Jyväskylä**
- 17.30–18.00** **Departure for the post-  
symposium tour** (Not included in  
the registration fees, see details in  
general information.)



# **UNIVERSAL versus INDIVIDUAL**

**the architecture of the 1960's**

Alvar Aalto Academy, Alvar Aalto Museum  
University of Art and Design Helsinki UIAH  
City of Jyväskylä

**International Conference  
on the Research of Modern Architecture  
30 August - 1 September 2002  
Jyväskylä, Finland**

This International Conference brings together researchers and professionals in architecture to reflect on and discuss the architectural legacy of the 1960s. Our aim is to explore the material and intellectual features of this turbulent decade so rich in both universal, overriding concepts and, equally, unheeding individualism. The keynote speakers and those who will present papers come from varying backgrounds and offer a wealth of perspectives: some focus on broadly shared concepts, others on aspects illustrating local phenomena.

This decade witnessed the first wave of globalization and media-based consciousness, as well as the rise of ecological and social radicalization. It also saw the culmination and demise of technological optimism, all of which was reflected in architectural thought and practice. We invite you to come and share our meeting, learn from our speakers and contribute your own comments.

# GENERAL INFORMATION

## Registrations Costs

### Earlybird registrations by June 28, 2002

150 € Full Delegate  
30 € Students and  
Post Graduate Students

### Conference registration

200 € Full Delegate  
50 € Students and  
Post Graduate Students

### Day registration

80 € Full Delegate  
20 € Students and  
Post Graduate Students

**Full conference registrations include the lectures, evening reception and party, and a field trip to Jyväskylä and its surroundings on Sunday.**

Members of The Finnish Association of architects are entitled to a 15% discount from the registration fee.

## Organizers and Conference Committee

**Alvar Aalto Academy**  
www.alvaraalto.fi

**Alvar Aalto Museum**  
www.alvaraalto.fi

**University of Art and Design UIAH**  
www.uiah.fi

**City of Jyväskylä**  
www.jyvaskyla.fi/international


**Conference Chair:**  
**Mr. Pekka Korvenmaa**  
PhD., professor, UIAH

**Conference secretariat:**  
**Mr. Esa Laaksonen**  
Director, Alvar Aalto Academy  
**Ms. Marjo Holma**  
Project Secretary, Alvar Aalto Museum  
**Ms. Merja Vainio**  
Secretary, Alvar Aalto Academy

**Conference venue:**  
The main auditorium of the Jyväskylä University (designed by **Alvar Aalto**).

## Contact Information

**Registration:**  
**Ms. Marjo Holma**  
marjo.holma@alvaraalto.fi  
tel. +358 (0)14 624 811

**All occasions management:**  
 ALVAR AALTO AKATEMIA ACADEMY

Tiilimäki 20, 00330 Helsinki  
Finland  
tel. +358 (0)9 4243 3310  
fax. +358 (0)9 485 119  
e-mail: u-i@alvaraalto.fi  
www.alvaraalto.fi

## Post-Conference Excursion

**'Aalto, tradition and rationalism'**  
Sunday, September 1 –  
Tuesday, September 3, 2002

**Route:** Jyväskylä-Seinäjoki-Pori-  
Rauma-Turku-Helsinki.

**Duration:** 3 days/2 nights.

**Cost: 433 € per person**  
(incl. 22% VAT)

- English commentary by architect.
- Illustrated tour program.
- Entrance fees (museum and sites mentioned in program).
- Accommodation in hotels\*\*\* in double rooms, 2 nights.
- Transportation by coach.
- Meals mentioned in program (drinks not included!).

**Organizer of the tour:**  
**Arch-tours Ltd.**

**Further information:**  
Program and conditions,  
see [www.alvaraalto.fi/conferences/universal](http://www.alvaraalto.fi/conferences/universal).

**booking of hotels:** Please reserve your room from one of the following hotels. We have block reservation options valid until 31.7.2002. Code: 'universal conference 2002'.

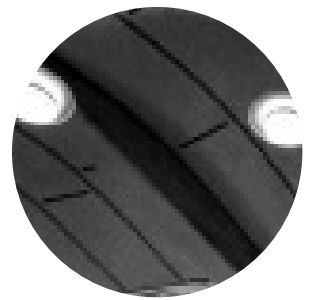
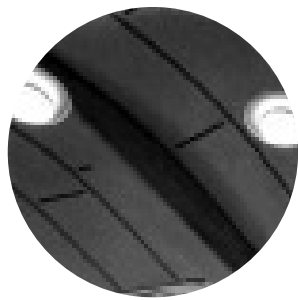
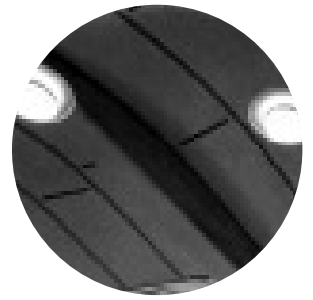
**Hotel Alba**  
Ahlmaninkatu 4,  
tel. +358-14-636 311  
fax. +358-14-636 300  
e-mail: [info@hotellialba.fi](mailto:info@hotellialba.fi)  
[www.hotellialba.fi](http://www.hotellialba.fi)

**Sokos Hotel Alexandra**  
Hannikaisenkatu 35,  
tel. +358-14-651 211  
fax. +358-14-651 200  
e-mail: [sales@jyvaskyla.sok.fi](mailto:sales@jyvaskyla.sok.fi)  
[www.sokoshotels.fi](http://www.sokoshotels.fi)

**Hotel Cumulus**  
Väinönkatu 3,  
tel +358-14-653 211  
fax. +358-14-653 299  
e-mail: [aluemyynti.jyvaskyla@restel.fi](mailto:aluemyynti.jyvaskyla@restel.fi)  
[www.rantasipi.fi](http://www.rantasipi.fi)

**Sokos Hotel Jyväshovi**  
Kauppakatu 35,  
tel. +358-14-630 211  
fax. +358-14-630 290  
e-mail: [sales@jyvaskyla.sok.fi](mailto:sales@jyvaskyla.sok.fi)  
[www.sokoshotels.fi](http://www.sokoshotels.fi)

**Scandic Hotel Jyväskylä**  
Vapaudenkatu 73  
tel. +358-14-330 3000  
fax. +358-14-616 996  
e-mail:  
[jyvaskyla@scandic-hotels.com](mailto:jyvaskyla@scandic-hotels.com)



# ACCEPTED PAPERS

**Tom Avermaete, Belgium:**

Acculturation of the Modern:  
Tourism, Consumer Culture  
and the Work of  
Candilis-Josic-Woods

**Charlotte Bundgaard, Denmark:**

Repetition versus Montage:  
Prefabricated industrialized  
building of the 1960s –  
in the light of the  
'new industrialization'

**Carola Ebert, Germany:**

Post-mortem: Collage City  
and the Death of the Architect

**Doug Evans, Australia:**

Centre and Periphery

**Raquel Franklin, Mexico:**

Transformations of Modernity:  
The Mexican case

**Mia Hipeli, Finland:**

Helsinki City Center  
by Alvar Aalto

**Kenneth Jakobs, USA:**

This Could Kill That:  
The Architecture of the  
École des Beaux-Arts  
Exhibition at the New York  
Museum of Modern Art

**Sandra Kaji-O'Grady, Australia:**

Serialism in the architectural  
experiments of the 1960s

**Peter Kohane, Australia:**

The Space of  
Human Agreement:  
Louis Kahn and the Room

**Natasa Koselj, Slovenia:**

Architecture of the 60s  
in Slovenia

**Andres Kurg, Estonia:**

Power within solitary dreams.  
Transformations of the private  
sphere in Soviet Estonia

**Juhana Lahti, Finland:**

The Formation of the  
Principles of Design in the  
Tapiola Commercial Center  
by Architect Aarne Ervi

**Thomas Leslie, USA:**

Capsule/Gantry:  
Two New Domestic  
Archetypes in the  
Architecture of the 1960s

**Hugh Maguire, Ireland:**

Architecture  
on the Edge:  
Ireland in the 1960s

**Tuija Mikkonen, Finland:**

Industry and Commerce  
Shaping Architecture –  
Local Applications of Viljo  
Rewell's International Ideas

**Michael Milojevic, New Zealand:**

Between the Aalto's  
and Eames's: the early work  
of the Corneils

**Aino Niskanen, Finland:**

An evaluation on the  
landscape and urban qualities  
of Pihlajamäki Residential  
Area

**Annie Pedret, USA:**

From CIAM to Team Ten

**Simon Sadler, England:**

Archigram and Technocracy

**Timo Tuomi, Finland:**

The Return of the Grid Plan:  
Town Planning, social  
sciences and the building  
industry in the 1960s

**Jan Verwijnen, Finland:**

The 1960s' Breakthrough of  
Conceptual Thinking:  
Process vs Product

**Juha Vuorinen, Finland:**

Architecture of the Frame –  
Finnish welfare state and the  
fear of the form



**Dipoli, Otaniemi, 1966.** Raaii and Reima Pietilä.  
Photo Museum of Finnish Architecture / Martti Jaatinen.

